

chapter

CENTRAL SUFFOLK • HAMPTONS • HUNTINGTON • NORTH FORK •
SUFFOLK NORTH SHORE • SUFFOLK SOUTH SHORE



SUFFOLK NORTH SHORE

Leadership 2017

The Suffolk North Shore Chapter was organized in 1955, and now has an active and growing membership. Our objective: to further productive cooperation among member REALTORS®, to increase professional proficiency through educational and informational meetings, and to greater benefit the community through contributions of both knowledge and service.

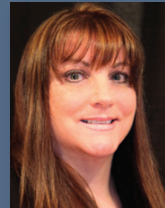
members

suffolk north shore	2,064
suffolk south shore	1,632
central suffolk	1,288
hamptons	853
huntington	1,816
north fork	395

average number of
annual chapter meetings 10

average meeting
attendants 40-50

average number of attendees
at annual suffolk divisional
meeting event 150



DAWN VIOLA
CHAPTER PRESIDENT
Coldwell Banker Residential
128 E Main Street
Smithtown, NY 11787
(631) 863-9800



ROSE TORRACA (SRES)
PRESIDENT ELECT
Coldwell Banker Residential
2395 Ocean Avenue, Suite 1
Ronkonkoma, NY 11779
(631) 588-9090



GINA AMEN (WCR, SRES)
TREASURER
American Real Estate Associates Inc.
530 Route 25A
Saint James, NY 11780
(631) 862-6605



TAMIR MORI
SECRETARY
Cornerstone Real Estate Services LLC
444 Route 111
Smithtown, NY 11787
(631) 257-0027



PETER DEMIDOVICH
SUFFOLK VICE PRESIDENT



DAVID LEGAZ
LIBOR 2017 PRESIDENT

geographically speaking...

SUFFOLK NORTH SHORE CHAPTER

The Suffolk North Shore Chapter of the Long Island Board of Realtors®, Inc. (LIBOR) covers the area of Suffolk County between Hauppauge to Stony Brook. LIBOR members working in Centereach, Coram, Setauket, Farmingville, Lake Ronkonkoma, Port Jefferson, Smithtown, Selden, and several towns in between, are members of the Suffolk North Shore Chapter.

HAMPTONS CHAPTER

The Hamptons Chapter of the Long Island Board of Realtors®, Inc. (LIBOR) covers the area of eastern Suffolk County between Hampton Bays and Montauk. LIBOR members working in Quogue, Westhampton Beach, Bridgehampton, Southampton, East Hampton, Eastport, Sag Harbor, and towns in between, are members of the Hamptons Chapter.

CENTRAL SUFFOLK CHAPTER

The Central Suffolk Chapter of the Long Island Board of Realtors®, Inc. covers the area of Suffolk County between Sayville to Wading River. LIBOR members working in Center Moriches, Bohemia, Bayport, Bellport, Patchogue, Middle Island, Mastic, Shirley, and many towns in between, are members of the Suffolk Central Chapter.

SUFFOLK SOUTH SHORE CHAPTER

The Suffolk South Shore Chapter of the Long Island Board of Realtors®, Inc. (LIBOR) covers the area of Suffolk County between Amityville and Islip. LIBOR members working in Babylon, Brentwood, Bay Shore, Farmingdale, Islandia, Lindenhurst, Wyandanch, Copiague, and several towns in between, are members of the Suffolk South Shore Chapter.

HUNTINGTON CHAPTER

The Huntington Chapter of the Long Island Board of Realtors®, Inc. (LIBOR) covers the area of Suffolk County between Cold Spring Harbor and Northport. LIBOR members working in Centerport, Dix Hills, Huntington, Huntington Station, Melville, Commack, East Northport, and towns in between, are members of the Huntington Chapter.

NORTH FORK CHAPTER

The North Fork Chapter of the Long Island Board of Realtors®, Inc. (LIBOR) covers the area of eastern Suffolk County between Riverhead and Orient. LIBOR members working in Aquebogue, Cutchogue, Greenport, Southold, Jamesport and towns in between, are members of the North Fork Chapter.

REAL ESTATE MARKET DATA

2015 Long Island Median Home Price*	\$390,000
Nassau County Closed Median Home Price	\$438,000
Suffolk County Closed Median Home Price	\$330,000
Queens County Closed Median Home Price	\$418,000
LI Contracted (Pending) Median Home Price	\$389,000
LI 2015 Closed Sales Activity	34,237
LI 2015 Contracted Sales Activity	37,367

*Long Island includes data from Nassau, Suffolk and Queens counties.

ABOUT LIBOR

Since 1910 the Long Island Board of Realtors® Inc., (LIBOR) has been the voice of Long Island Real Estate. We represent over 24,000 Realtor members and over 185 Affiliated business members.

For more information on how to get involved contact Mike Miller, Business Development Manager, 631-661-4800 x384 or mmiller@lirealtor.com.

SUFFOLKNORTHSHORE.LIREALTOR.COM